

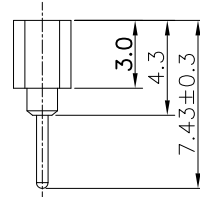
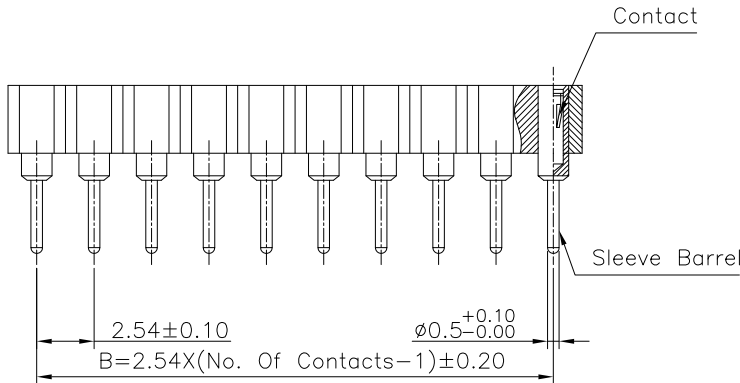
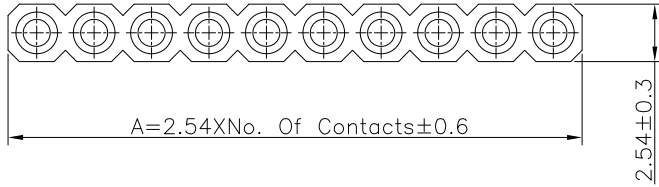
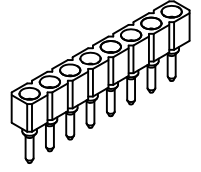
1

2

3

4

5



Specifications:

Current rating:3.0A AC/DC
 Voltage rating:100V AC/DC
 Contact resistance:20m ohm. max.
 Insulator resistance:1000M ohm. Min.
 Withstanding voltage:1000V AC for one minute
 Operating temperature range:-40°C to +105°C

Material and Finish:

Insulator:High Temp. Plastic(PPS UL94V-0)
 Standard Color:Black
 Contact:Beryllium Copper(Becu) Gold Flash
 Sleeve Barrel:Brass Gold Flash

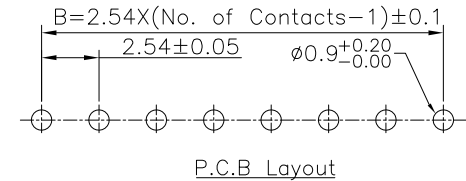
How To Order

SBU-XXOX

G:Contact Area Gold Flash
 Sleeve Barrel Gold Flash
 G10:Contact Area 10u" Gold Plated
 Sleeve Barrel Gold Flash
 Z:Contact Area TIN Plating (STD)
 No. of Contacts

Dimension:

Circuits	Dim.A	Dim.B	Circuits	Dim.A	Dim.B	Circuits	Dim.A	Dim.B	Circuits	Dim.A	Dim.B
02	5.08	2.54	12	30.48	27.94	22	55.88	53.34	32	81.28	78.74
03	7.62	5.08	13	33.02	30.48	23	58.42	55.88	33	83.82	81.28
04	10.16	7.62	14	35.56	33.02	24	60.96	58.42	34	86.36	83.82
05	12.70	10.16	15	38.10	35.56	25	63.50	60.96	35	88.90	86.36
06	15.24	12.70	16	40.64	38.10	26	66.04	63.50	36	91.44	88.90
07	17.78	15.24	17	43.18	40.64	27	68.58	66.04	37	93.98	91.44
08	20.32	17.78	18	45.72	43.18	28	71.12	68.58	38	96.52	93.98
09	22.86	20.32	19	48.26	45.72	29	73.66	71.12	39	99.06	96.52
10	25.40	22.86	20	50.80	48.26	30	76.20	73.66	40	101.60	99.06
11	27.94	25.40	21	53.34	50.80	31	78.74	76.20			



RoHS Compliant

F				DRAWN: LISY	GENERAL TOLERANCE: .X=±0.20 .XX=±0.15	 ON-SHORE TECHNOLOGY, INC.
E						
D				CHECKED: JERRY	UNIT: MM	DESCRIPTION: 2.54mm Machine Pin Socket Single Row
C					SCALE: 1:1	
B				APPROVAL: RORY	SHEET: 1/1	PART NO: SBU-XXOZ
A	09-AUG-2021		JERRY		PROJECTION:	
REV	DATE	FILE	BY			