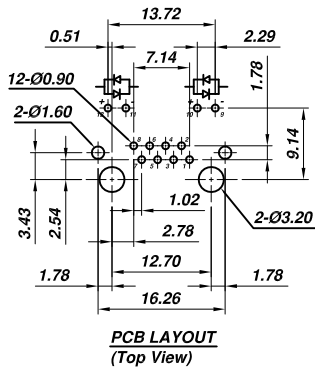
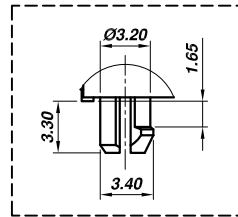


Recommended Panel Cutout



**PCB LAYOUT
(Top View)**



A(2:1)

Material:

- Housing: Nylon (UL 94V-0)
- Color: Black
- Spring Wire: 0.35mm Diameter Phosphor Bronze
Gold Plating over Nickel

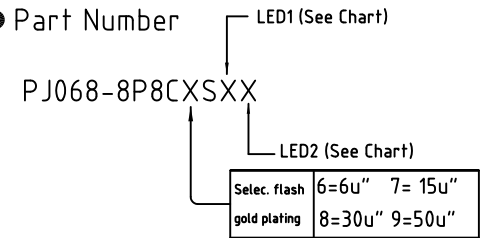
- Temp. Range: -40°C/+85°C
- Soldering Temp: 235°C
- Durability: 500 Mating cycles Min.

Electrical:

- Current rating: 1.5A Max.
- Voltage rating: 120V AC
- Insulation Resistance: 500 M Ω Min.
- Contact Resistance: 20m Ω Max.
- Dielectric Voltage: 1,000 Vrms for 60 sec. min.

RoHS Compliant

● Part Number



LED Designgntion:

Code	Forward	Reverse	Code	Forward	Reverse
G	Green	—	4	Yellow	Red
Y	Yellow	—	5	Green	Yellow
R	Red	—	6	Yellow	Green
O	Orange	—	9	Red	Green
3	Green	Red	0	Red	Yellow

THESE DRAWINGS AND SPECIFICATIONS ARE THE PROPERTY OF ON-SHORE TECHNOLOGY, INC. AND SHALL NOT BE REPRODUCED, COPIED OR USED IN ANY MANNER WITHOUT THE PRIOR WRITTEN CONSENT OF ON-SHORE TECHNOLOGY, INC.



ON-SHORE TECHNOLOGY, INC.

TITLE		PJ068, side entry, shielded, w/LEDs, 8pos, 8 cont, grounding tabs					
PART NO.		PJ068-8P8CX SXX			DWG NO.		PJ068-8P8CX SXX.DWG
APPROVED		CHECKED	DESIGNED	DRAWN	CUST NO.		Tolerance
Billy 2012.01.01		Johnn 2012.06.01	Tony 2012.06.01	Steven 2012.06.01			X.XX ±0.25 X.XXX ±0.13 X.XXXX ±0.05
SHEET: 01/01		UNIT: mm		SCALE: NONE		REV: A	