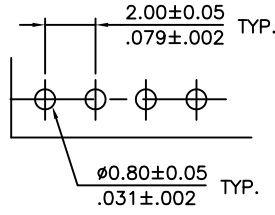
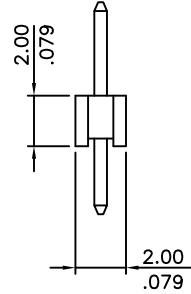
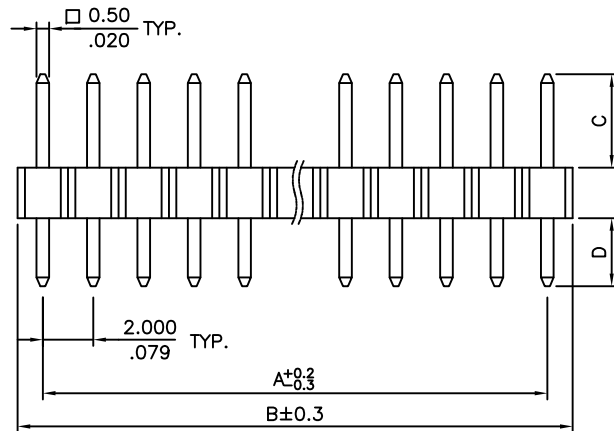
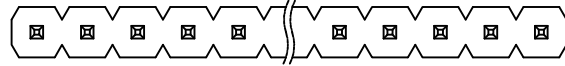


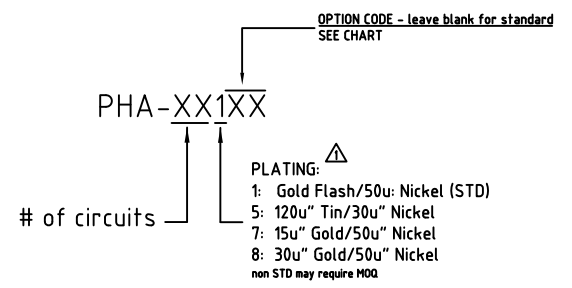
SIGN	DATE	DESCRIPTION	APPROVER
△	07.27.2016	Plating detail added	SD
THIS IS CAD DRAWING, DO NOT REVISE MANUALLY!!!			



A = 2.00 * No. of Spaces
 B = A + 2.00
 * Available in 02 through 40 circuits

- Material:**
- Insulator: PBT, UL94V-0
 - Color: Black
 - Contacts: Brass
- Electrical:**
- Current: 1A Max.
 - Voltage: 250V AC(r.m.s.)
 - Insulation Resistance: >1000 MΩ
 - Contact Resistance: <20mΩ
 - Dielectric Voltage: 1000VAC/minute
 - Operating Temperature: -40°C ~ +105°C
- RoHS Compliant

Part Number



Pin Length Option Chart

Option Code	Dimensions	
	C	D
STANDARD	3.90(.154)	2.80(.110)
01	6.80(.268)	3.00(.118)
02	9.00(.354)	2.00(.079)
03	8.00(.315)	3.00(.118)
04	12.00(.472)	3.50(.138)
05	7.45(.293)	2.80(.110)
A0	3.95(.156)	2.80(.110)
PA	3.50(.138)	2.50(.098)
K0	3.00(.118)	3.00(.118)

Non standard may require mins.

Recommended P.C. Board Layout

THESE DRAWINGS AND SPECIFICATIONS ARE THE PROPERTY OF ON-SHORE TECHNOLOGY, INC. AND SHALL NOT BE REPRODUCED, COPIED OR USED IN ANY MANNER WITHOUT THE PRIOR WRITTEN CONSENT OF ON-SHORE TECHNOLOGY, INC.

OST ON-SHORE TECHNOLOGY, INC.

TITLE	PHA Series, 2.00mm, single Row header		
PART NO.	PHA-XX1XX	DWG NO.	PHA-XX1XX.DWG
APPROVED	CHECKED	DESIGNED	DRAWN
		Marvin 2003.06.30	Marvin 2003.06.30
		4050	
		Tolerance	
		UNIT: mm/inches	X.X ±0.30/.012
		SCALE: NONE	X.XXX ±0.20/.008
		REV.: A	X* ±0.10/.004
		SHEET: 01/01	X* ±1°