

SIGN	DATE	DESCRIPTION	APPROVER
THIS IS CAD DRAWING, DO NOT REVISE MANUALLY!!!			

**SPECIFICATIONS**

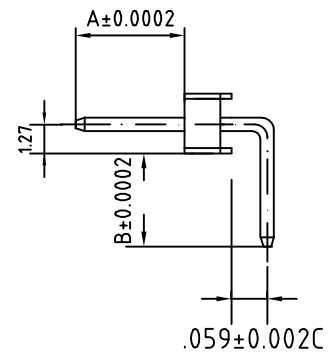
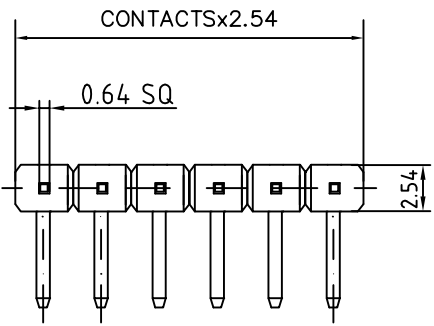
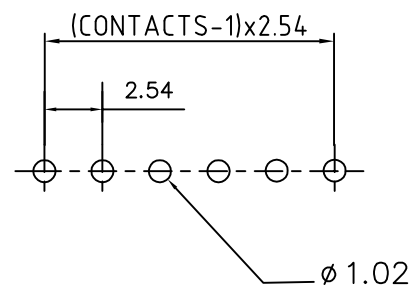
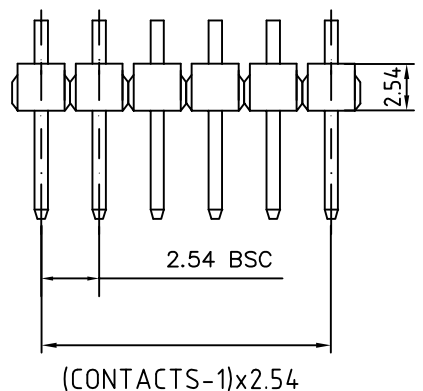
Current Rating: 3A AC,DC  
Voltage Rating: 250V AC,DC  
Temperature Range: -25°C ~ +85°C  
Contact Resistance: <20mΩ  
Insulation Resistance: >1000MΩ  
Withstanding Voltage: 1500V AC/minute  
Insulator Material: Nylon 6T,UL94V-0  
Color: Black

**MAXIMUM SOLDERING TEMPERATURE**  
Soldering Time: 5 ± 0.5 seconds  
Solder Pot: 245 ± 5°C

RoHS Compliant

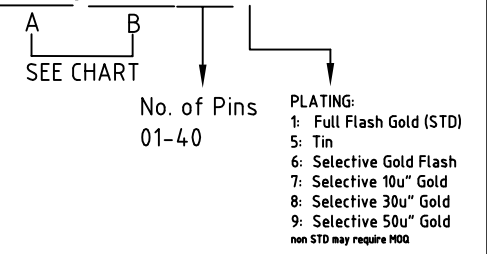
Dimensions in inches	
A	B
095	110
105	135
125	125
170	160
224	100
230	100
230	120
230	300
235	195
265	115
276	116
295	135
318	125
340	090
365	125
420	115
430	100
500	120
520	110
720	115
820	110

**RECOMMENDED P.C.B LAYOUT**



PART NUMBER:

**PH3-XXX/XXX-XXX**



THESE DRAWINGS AND SPECIFICATIONS ARE THE PROPERTY OF ON-SHORE TECHNOLOGY, INC. AND SHALL NOT BE REPRODUCED, COPIED OR USED IN ANY MANNER WITHOUT THE PRIOR WRITTEN CONSENT OF ON-SHORE TECHNOLOGY, INC.



TITLE		PH3 - Pin header, thru hole, single row, right/angle			
PART NO.	PH3-A/B-XXX	DWG NO.	PH3-A/B-XXX.DWG		
APPROVED	CHECKED	DESIGNED	DRAWN	9242	
	Marvin 2002.03.12	Marvin 2002.03.12	Marvin 2002.03.12	Tolerance	
				UNIT: mm	X.* ±1°
				SCALE: NONE	X.X ±0.25
				SHEET: 01/01	X.XX ±0.15
				REV.: A	X.XXX ±0.05