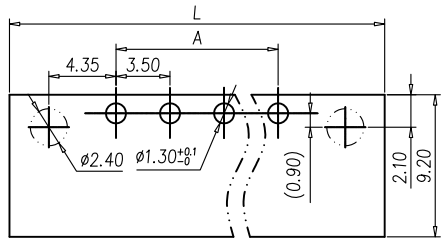


Transfer or duplication of this document as well as the utilisation or communication of its content are not permitted unless express consent is granted. Violations give rise to claims for damages. All rights reserved in case of patent, utility model or design patent registrations.

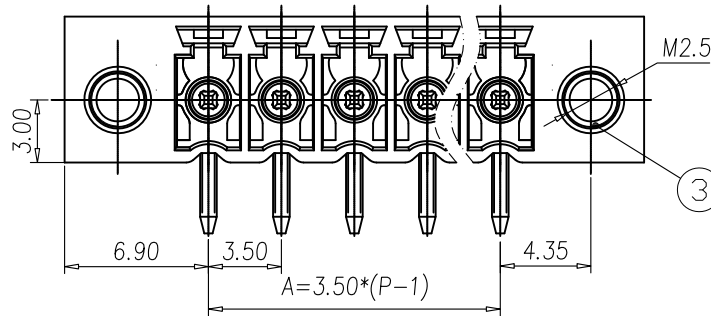
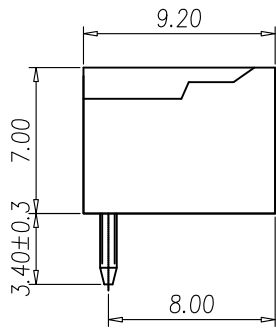
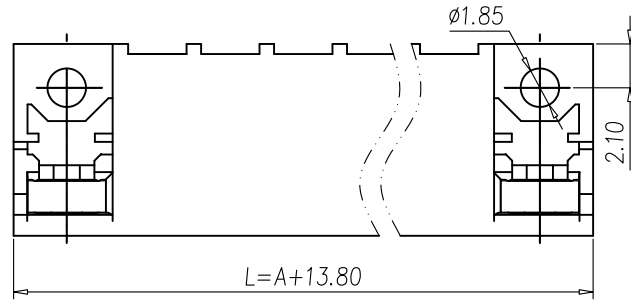
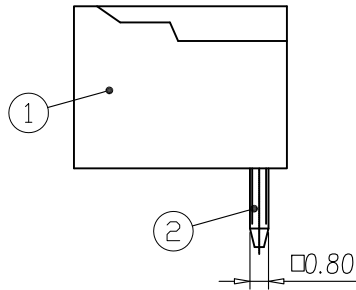


PCB LAYOUT
S=3:1

Technical Data:
Electrical

Pitch: 3.5mm
 Voltage rating: 300 V
 Current rating: 13 Amps
 Rate Impulse Voltage: 2500V
 Contact resistance: 5mΩ(max)
 Withstanding Voltage: 2000VAC(1min) Test time=60sec/1pcs
 Operating temperature: -40°C to +115°C

Safety approval:
 RoHS Compliance



Part No.:

OSTOQXX15512

No. of Poles
 02 2 Poles
 03 3 Poles

 24 24 Poles

COLOR
 0: Black
 2: Red
 3: Orange
 4: Yellow
 5: Green (Standard)
 6: Blue
 8: Grey

Nonstandard colors
 Mins could apply

3	Nut	Copper Alloy	M2.5	2
2	Solder Pin	Copper Alloy	Tin Plated	P
1	Body	PA66 UL94V-0		1
ITEM	NAME OF PART	MATERIAL	NOTES	Q"TY
DWG.	DATE	UNITS:	MM	SHEET: 1 OF 1
CHK.	DATE	SCALE:	NONE 3:1 (:) REV.: A	X. ±0.50
APP.	DATE	TITLE:	OSTOQ SERIES 3.5MM MOUNTING HOLES	X.XX ±0.30
		PART NO.	OSTOQXX15512	X° ±1°
		DWG NO.	OSTOQXX15512.DWG	

REV	SIGN	DESCRIPTION	CHK.	DATE
	△			



ON-SHORE TECHNOLOGY, INC.