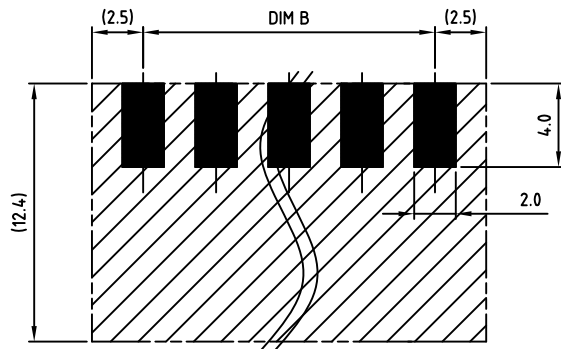
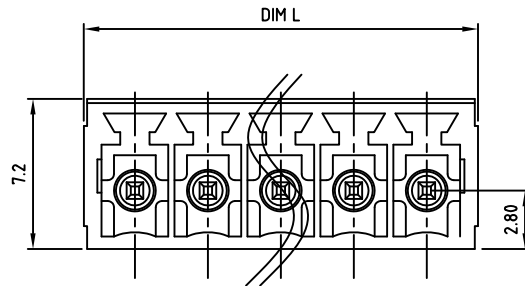
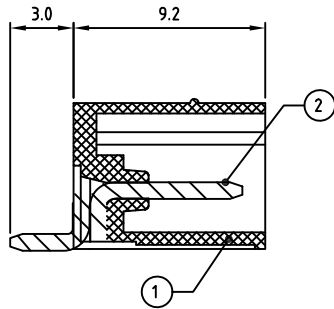
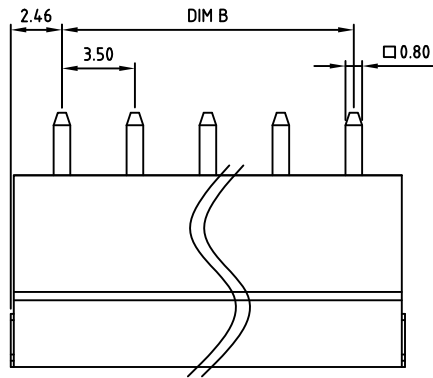


Transfer or duplication of this document as well as the utilisation or communication of its content are not permitted unless express consent is granted. Violations give rise to claims for damages. All rights reserved in case of patent, utility model or design patent registrations.



PCB LAYOUT

Technical data

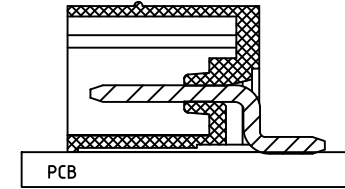
1. Nominal voltage: 300V/8A (IEC 160V/8A)  
PITCH: 3.5mm
2. Insulation Withstanding Voltage:  
AC1600V/MIN
3. Insulation Resistance:  
1000MΩ or more at DC500V
4. Temperature range: -40°C ~ 115°C
5. Soldering temperature range: 260°C ± 5°C / 10sec
6. Safety approval:
7. RoHS Compliance

8. Undimensioned Tolerances:

Dim.L=(P-1)x3.5+4.9		
Dim.B=(P-1)x3.5		
P= number of poles		
	Dim B	Dim L
0-30mm	±0.15	±0.20
over 30mm-60mm	±0.20	±0.25
over 60mm-90mm	±0.25	±0.30
over 90mm	±0.30	±0.40

OSTOQXX1251S

① Poles 02-16



2	PIN	COPPER	TIN PLATED	P
1	BODY	LCP UL94V-0	BLACK	1
ITEM	NAME OF PART	MATERIAL	NOTES	Q"TY
DWG.	WF. Zhang	DATE	2019.11.08	UNITS: MM
CHK.	WF. Zhang	DATE	2019.11.08	SCALE: NONE 4:1 (:)
APP.		DATE		REV: A
		TITLE:	OSTOQ 3.5mm Series	X.X ±0.50
		PART NO.	Closed SMT Side entry	X.XX ±0.30
		DWG NO.	OSTOQXX1251S	X° ±1°
		DWG NO.	OSTOQXX1251S.DWG	

REV	△	DESCRIPTION	CHK.	DATE



ON-SHORE TECHNOLOGY, INC.