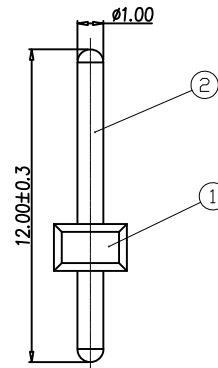
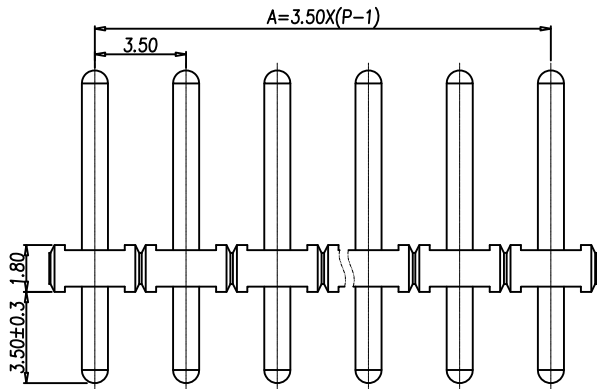
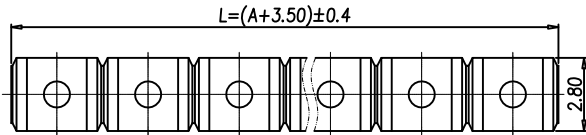
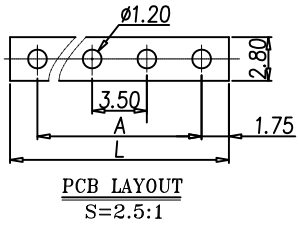


Transfer or duplication of this document as well as the utilisation or communication of its content are not permitted unless express consent is granted. Violations give rise to claims for damages. All rights reserved in case of patent, utility model or design patent registrations.



Technical data

1. Nominal voltage: 300V/10A
PITCH: 5.0mm
2. Insulation Withstanding Voltage:
AC 1600V/MIN
3. Insulation Resistance:
500M Ω or more at DC 500V
4. Operating temperature range: -40°C ~ 120°C
5. Safety approval:
6. RoHS Compliance

PART NUMBER:

OSTOPXX2B01

No. of Poles

02: Poles

... ..

24: Poles

2	PIN	Copper Alloy	TIN PLATED	P	
1	BODY	PA66 UL94V-0	BLACK	1	
ITEM	NAME OF PART	MATERIAL	NOTES	Q"TY	
DWG.	WF. Zhang	DATE 2016.05.26	UNITS: MM	SHEET: 1 OF 1	Tolerance
CHK.	WF. Zhang	DATE 2016.05.26	SCALE: NONE 2:1 (:)	REV: A	X. ± 0.50
APP.		DATE	TITLE: OSTOP 5.0 Series 180D $\phi 1.30$		X.XX ± 0.30
			L=12.5 black		X° $\pm 1^\circ$
			PART NO. OSTOPXX0000		
			DWG NO. OSTOPXX0000.dwg		

SIGN	DESCRIPTION	CHK.	DATE



ON-SHORE TECHNOLOGY, INC.