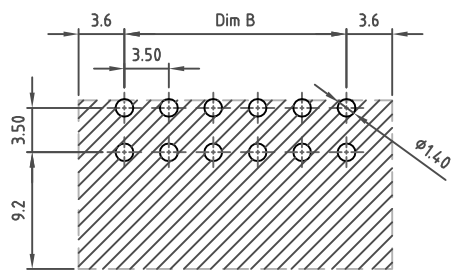
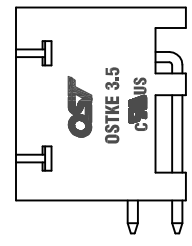
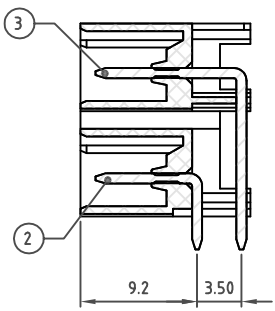
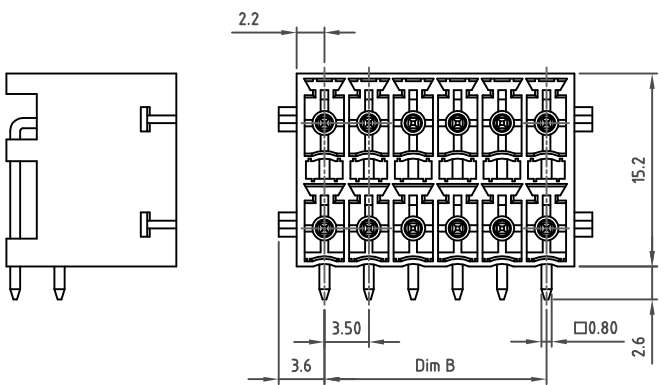
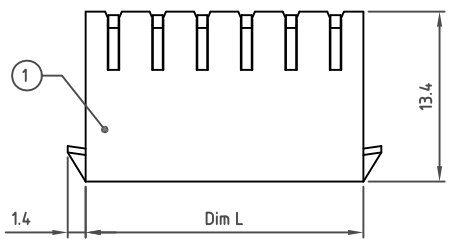


Transfer or duplication of this document as well as the utilisation or communication of its content are not permitted unless express consent is granted. Violations give rise to claims for damages. All rights reserved in case of patent, utility model or design patent registrations.



Technical data

1. Nominal voltage: 150V/8A
PITCH: 3.5mm
2. Insulation Withstanding Voltage:
AC 1300V/MIN
3. Insulation Resistance:
1000M Ω or more at DC500V
4. Operating temperature range: -40°C - 115°C
5. Soldering temperature range: 250°C \pm 10°C / 5sec
6. Undimensioned Tolerances:

Dim.L=(P-1)x3.5+4.4		
Dim.B=(P-1)x3.5		
P=1/2 Number of poles (04-48P)		
	Dim B	Dim L
0-30mm	± 0.15	± 0.20
over 30mm-60mm	± 0.20	± 0.25
over 60mm-90mm	± 0.25	± 0.30
over 90mm	± 0.30	± 0.40

7. Safety approval:
8. RoHS Compliance

Part No.:

OSTKEXX1351

No. of Poles	COLOR
02 2 Poles	0: Black
03 3 Poles	2: Red
...	3: Orange
24 24 Poles	4: Yellow
	5: Green (Standard)
	6: Blue
	8: Grey
Nonstandard colors Mins could apply	

3	PIN 2	COPPER	TIN PLATED	1/2P
2	PIN 1	COPPER	TIN PLATED	1/2P
1	BODY	PA66 UL94V-0	ALL COLOR	1
ITEM	NAME OF PART	MATERIAL	NOTES	Q'TY
DWG.	WF. Zhang	DATE 2017.10.26	UNITS: MM	SHEET: 1 OF 1
CHK.	WF. Zhang	DATE 2017.10.26	SCALE: NONE 2.5:1 (:)	REV.: A
APP.		DATE	TITLE: OSTKE 3.5 Series with engagement nose type 90D	X. ± 0.50
			PART NO. OSTKEXX1351	X.X ± 0.30
			DWG NO. OSTKEXX1351.dwg	X* $\pm 1^{\circ}$

	SIGN	DESCRIPTION	CHK.	DATE
--	------	-------------	------	------



ON-SHORE TECHNOLOGY, INC.