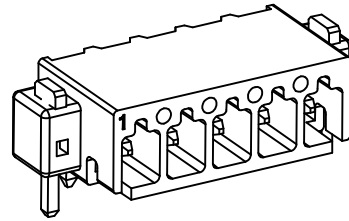


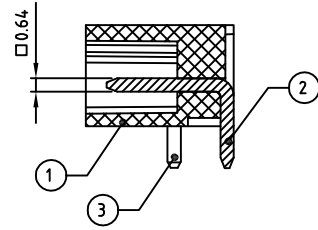
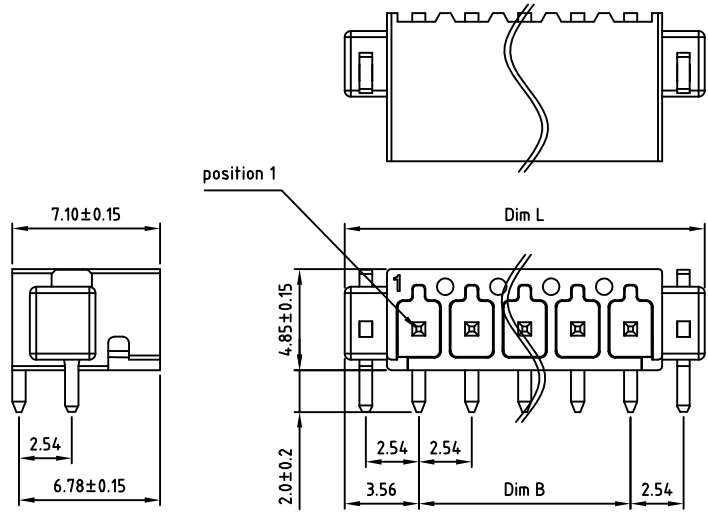
Transfer or duplication of this document as well as the utilisation or communication of its content are not permitted unless express consent is granted. Violations give rise to claims for damages. All rights reserved in case of patent, utility model or design patent registrations.



**Technical data**

1. Nominal voltage: 150V/6A  
PITCH: 2.54mm
2. Insulation Withstanding Voltage:  
AC1300V/MIN
3. Insulation Resistance:  
1000MΩ or more at DC500V
4. Operating temperature range: -40°C ~ 115°C
5. Soldering temperature range: 260°C±5°C/10sec
6. Safety approval: Pending
7. RoHS Compliance
8. Undimensioned Tolerances:

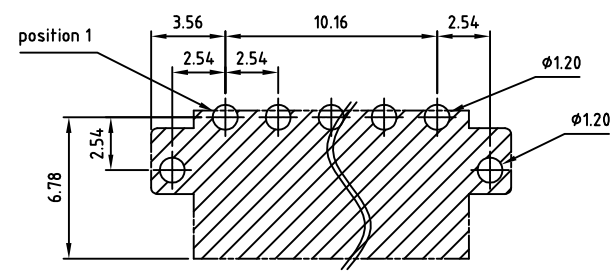
Dim.L=(P-1)x2.54+7.12		
Dim.B=(P-1)x2.54		
P= Number of poles(02-16)		
	Dim B	Dim L
0-30mm	±0.15	±0.20
over 30mm-60mm	±0.20	±0.25
over 60mm-90mm	±0.25	±0.30
over 90mm	±0.30	±0.40



Part No.:

**OSTHCCH254XX000**

No. of Poles  
 02 2 Poles  
 03 3 Poles  
 ...  
 24 24 Poles



P.C.B. LAYOUT

3	FLANGE PIN	BRASS	TIN PLATED	2	
2	PIN	Copper	Au 3u" PLATED	P	
1	BODY	LCP UL94V-0	BLACK	1	
ITEM	NAME OF PART	MATERIAL	NOTES	Q"TY	
DWG	WF. Zhang	DATE 2017.09.20	UNITS: MM	SHEET: 1 OF 1	Tolerance
CHK.	WF. Zhang	DATE 2018.05.21	SCALE: NONE 4:1 (:)	REV: A	X. ±0.50
APP.		DATE	TITLE: OSTHC-CH254 Series Right angle (90D) THR Type		X.XX ±0.30
			PART NO. OSTHCCH254XX000		X* ±1°
			DWG NO. OSTHCCH254XX000.dwg		

SIGN	DESCRIPTION	CHK.	DATE



ON-SHORE TECHNOLOGY, INC.