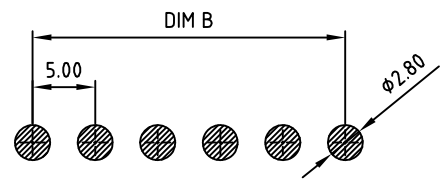
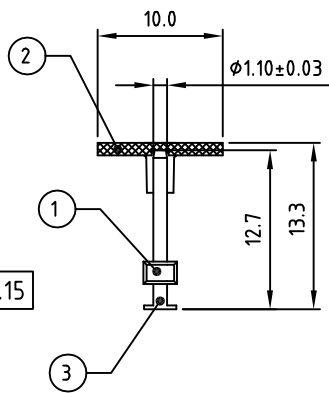
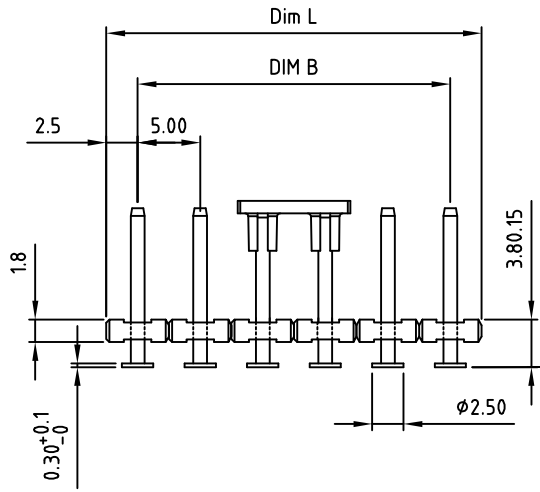
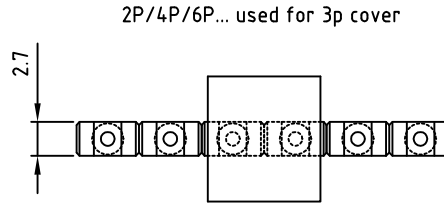
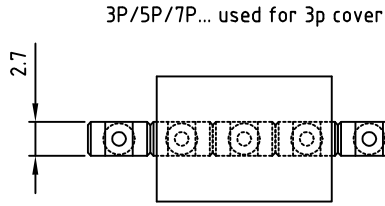


Transfer or duplication of this document as well as the utilisation or communication of its content are not permitted unless express consent is granted. Violations give rise to claims for damages. All rights reserved in case of patent, utility model or design patent registrations.



P.C.B. LAYOUT

Technical data

- 1.Nominal voltage: 300V/10A
PITCH:5.0mm
- 2.Insulation Withstanding Voltage:
AC 1600V/MIN
- 3.Insulation Resistance:
1000MΩ or more at DC500V
- 4.Operating temperature range:-40°C ~ 115°C
Soldering temperature:260°C±5°C/10s
- 5.Undimensioned Tolerances:

Dim.L=Px5.0		
Dim.B=(P-1)x5.0		
P= number of poles (2-15P)		
0-30mm	Dim B ±0.15	Dim L ±0.20
over 30mm-60mm	±0.20	±0.25
over 60mm-90mm	±0.25	±0.30
over 90mm	±0.30	±0.40

6.RoHS Compliance

Part No.:
OSTFWXX0000

↓

No. of Poles
02 2 Poles
03 3 Poles
... ..
24 24 Poles

3	Solder PIN	BRASS H62	TIN, PLATED	P	
2	T&R COVER	PA6T UL94V-0	BLACK	1	
1	BODY	PA6T UL94V-0	BLACK	P	
ITEM	NAME OF PART	MATERIAL	NOTES	Q"TY	
DWG	WF. Zhang	DATE 2018.03.14	UNITS: MM	SHEET: 1 OF 1	Tolerance
CHK.	WF. Zhang	DATE 2018.03.14	SCALE: NONE 2:1 (:)	REV: A	X. ±0.50
APP.		DATE	TITLE: OSTFW 5.0mm Series, SMT header		X.XX ±0.30
			PART NO. OSTFWXX0000		X* ±1*
			DWG NO. OSTFWXX0000.dwg		

△				
SIGN	DESCRIPTION	CHK.	DATE	



ON-SHORE TECHNOLOGY, INC.