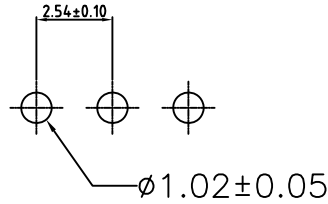
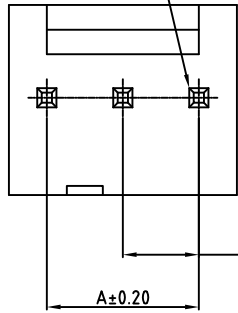


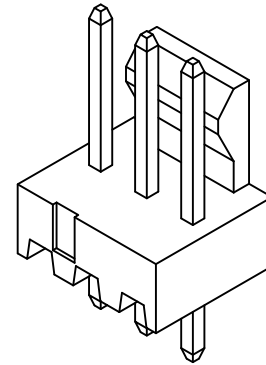
SIGN	DATE	DESCRIPTION	APPROVER

THIS IS CAD DRAWING, DO NOT REVISE MANUALLY!!!

Circuit 1



P.C.B LAYOUT



SPECIFICATIONS

Current: 4 A AC,DC  
Voltage: 250V AC,DC  
Temperature Range: -25°C ~ +85°C  
Contact Resistance: <10mΩ  
Insulation Resistance: >1000MΩ  
Withstanding Voltage: 1000V AC/minute  
Pin Material: Brass/Tin  
Material: Nylon 66  
Color: Rust/Brown

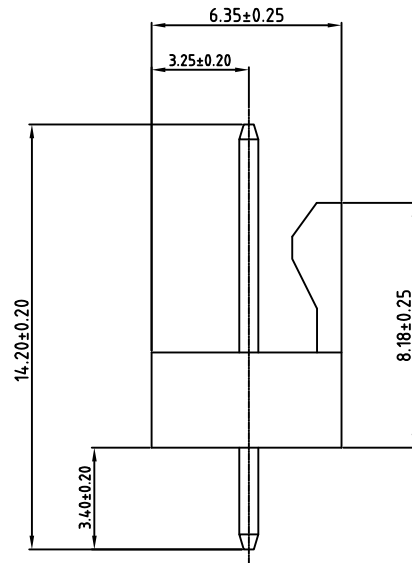
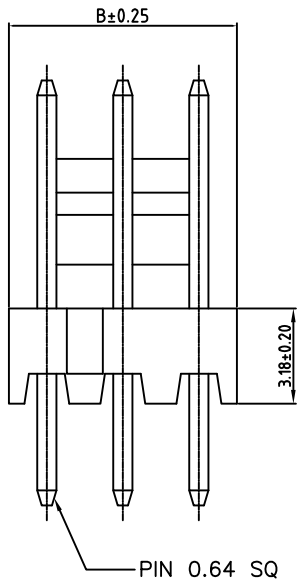
RoHS Compliant

PART NUMBER:

FL254B1V0XX

Number of Positions:

- 02: 2 pos
- 03: 3 pos
- .....
- 20: 20 pos



POSITIONS	Dimensions	
	A	B
2	2.54	5.08
3	5.08	7.62
4	7.62	10.16
5	10.16	12.70
6	12.70	15.24
7	15.24	17.78
8	17.78	20.32
9	20.32	22.86
10	22.86	25.40
11	25.40	27.94
12	27.94	30.48
13	30.48	33.02
14	33.02	35.56
15	35.56	38.10
16	38.10	40.64
17	40.64	43.18
18	43.18	45.72
19	45.72	48.26
20	48.26	50.80

THESE DRAWINGS AND SPECIFICATIONS ARE THE PROPERTY OF ON-SHORE TECHNOLOGY, INC. AND SHALL NOT BE REPRODUCED, COPIED OR USED IN ANY MANNER WITHOUT THE PRIOR WRITTEN CONSENT OF ON-SHORE TECHNOLOGY, INC.



TITLE		FL254B1 Series - 2.54mm friction lock, low profile			
PART NO.	FL254B1V0XX	DWG NO.	FL254B1V0XX.DWG		
APPROVED	CHECKED	DESIGNED	DRAWN	9242	
	Marvin 2006.02.08	Marvin 2006.02.08	Marvin 2006.02.08	Tolerance	
				UNIT: mm	.XX ±0.30/.012
				SCALE: NONE	.XXX ±0.20/.008
				REV.: A	.XXX ±0.10/.004
				SHEET: 01/01	X* ±1°