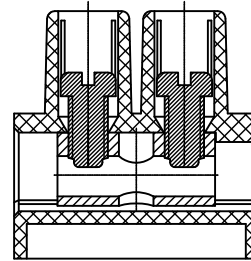



SIGN	DATE	DESCRIPTION	APPROVER
Δ	07.26.2012	Added mounting hole diameter	
THIS IS CAD DRAWING, DO NOT REVISE MANUALLY!!!			

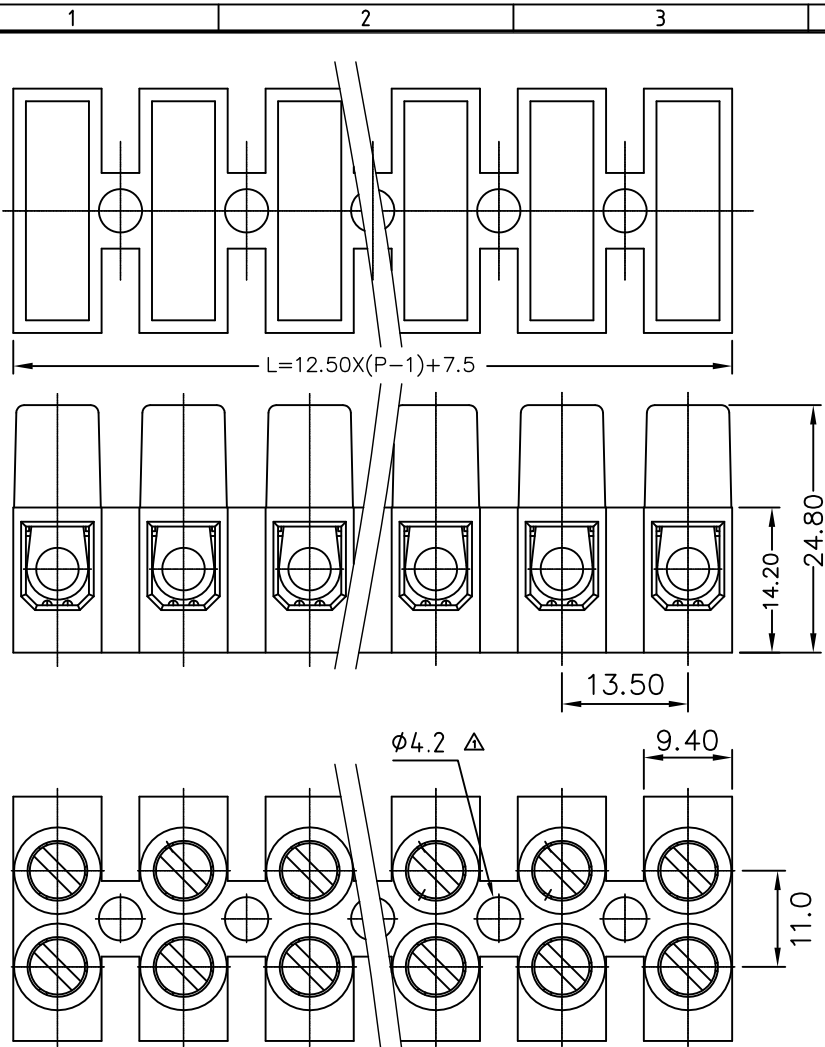
NOTES:

1. Rating: 300V 50A (UL)
2. Insulation Withstanding Voltage: AC2000V/MIN
3. Insulation Resistance: $\geq 500M\Omega$ or more at DC500V
4. Temperature Range: $-33^{\circ}C/+105^{\circ}C$
5. Screw Torque Value: 4.5 lbf-in (UL)
6. Wire Range: 8-18AWG
8. Housing: Nylon PA66, UL-94V0
9. Screw M4, Steel, Zinc Plated
10. Standard Color: Natural



Agency Approvals:  

RoHS Compliant



DIM	P	2	3	4	5	6	7	8	9	10	11	12
L		19.5	31.5	43.5	55.5	67.5	79.5	91.5	103.5	115.5	127.5	139.5
TOL (±)		0.08	0.12	0.16	0.20	0.24	0.28	0.32	0.36	0.40	0.44	0.48

THESE DRAWINGS AND SPECIFICATIONS ARE THE PROPERTY OF ON-SHORE TECHNOLOGY, INC. AND SHALL NOT BE REPRODUCED, COPIED OR USED IN ANY MANNER WITHOUT THE PRIOR WRITTEN CONSENT OF ON-SHORE TECHNOLOGY, INC.



TITLE		ES1350 Series - 13.50mm Euro Strip, flat base	
PART NO.	ES1350/XXFB (XX - number of poles per row)	DWG NO.	ES1350/XXFB.DWG
APPROVED	CHECKED	DESIGNED	DRAWN
KSZ 2007.08.01	KSZ 2007.08.01	KSZ 2007.08.01	KSZ 2007.08.01
SHEET: 01/01		Tolerance	
		UNIT: mm	.X ±015
		SCALE: NONE	.XX ±0.075
		REV: A	.XXX ±0.05