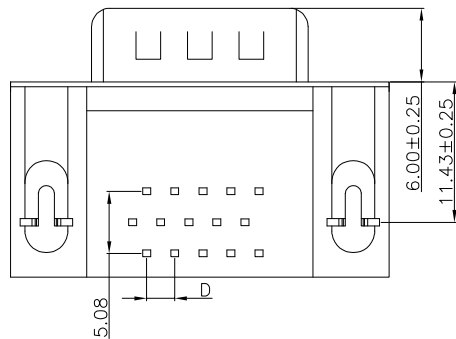
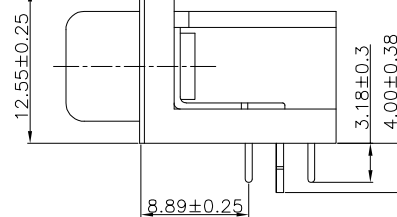
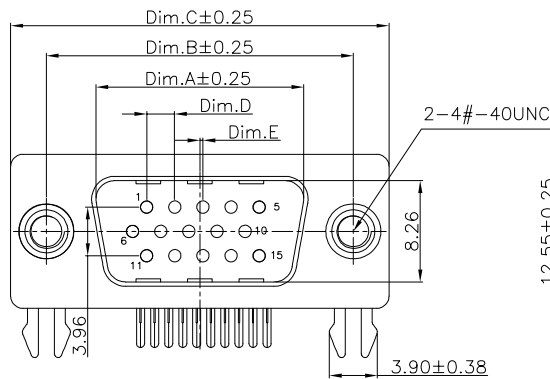


Recommended P.C.B Layout



Dimension Information:

Pos	A	B	C	D	E
15	16.92	24.99	30.81	2.29	0.25
26	25.25	33.32	39.14	2.29	0.50
44	38.96	47.04	53.04	2.29	0.50
62	55.42	63.50	69.40	2.41	0.60

Specifications

Current Rating:3.0A AC/DC
 Voltage Rating:250V AC/DC
 Contact Resistance:30m ohm. Max.
 Insulation Resistance: 1,000M ohm. Min.
 Withstanding Voltage:500V AC For One Minute
 Operating Temperature Range:-55°C ~ +105°C

Material and Finish

Insulator:PBT UL94V-0
 Contact:Copper Alloy
 Plating:Gold Plated 0.5u"min on Contact area,80u" min Tin
 Plated on Solder Tails, All over under Nickel 30u"min.
 Shell:Spcc,Nickel Plated
 Fork:Brass,Tin Plated
 Rivet:Brass,Nickel Plated

How To Order

DMRH-XXPX-XXXX(see options)

Plating
 6= Selective Gold flash/Nickel (STD)
 7 = Selective 15u" Gold/Nickel
 8 = Selective 30u" Gold/Nickel
 NON-STD may require MOQ

Options

A-4-40 Jack screws assembled
 B-Board Locks
 F-Ferrite
 G-Grounding Straps
 J-4-40 Jack Screws (bulk packed)
 R-Riveted 4-40 Jack screws
 T-Threaded Inserts
 PB-Pantone Blue

RoHS Compliant

REV	DATE	FILE	BY
A	20-AUG-2018		Jack Huang
B	10-JUN-2020	Add "0310" Plated & "P" TYPE	Jamie
C	09-MAR-2022	Add Packing List	MEI
D	19-APR-2022	Add Plated	MEI
E			
F			

DRAWN:	Jack Huang
CHECKED:	Jerry Chen
APPROVAL:	Mike Wu

GENERAL TOLERANCE:	.X=±0.30 .XX=±0.20
UNIT:	MM
SCALE:	1:1
SHEET:	1/2
PROJECTION:	

ON-SHORE TECHNOLOGY, INC.	
DESCRIPTION:	D-SUB Plug High Density Right Angle Type
PART NO:	DMRH-XXPX-XXXX

SIZE	A4
------	-----------