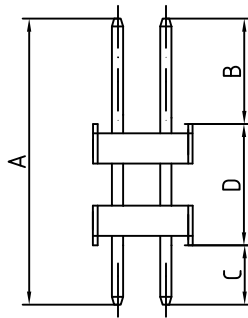
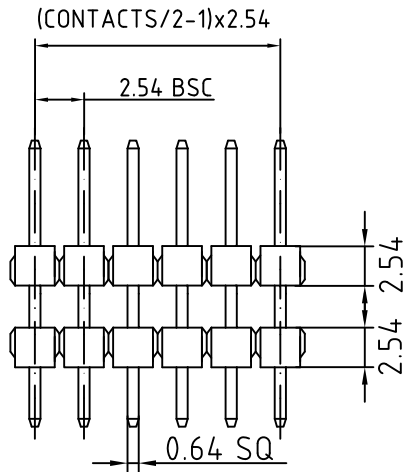


RECOMMENDED P.C.B LAYOUT

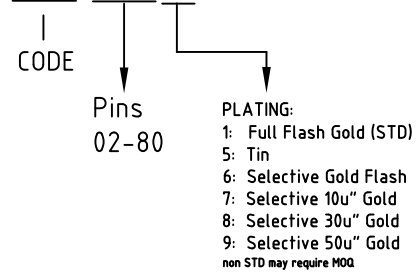


Current Rating: 3A
 Voltage Rating: 250V
 Temperature Range: -55°C ~ +105°C
 Contact Resistance: <20mΩ
 Insulation Resistance: >1000MΩ
 Withstanding Voltage: 1000V AC/minute
 Insulator Material: Thermoplastic, UL94V-0
 Color: Black
 Plating: Tin over Nickel
 contact OST for other options

RoHS Compliant
 SPECIFICATIONS

PART NUMBER:

DH2-XX-XXX




THESE DRAWINGS AND SPECIFICATIONS ARE THE PROPERTY OF ON-SHORE TECHNOLOGY, INC. AND SHALL NOT BE REPRODUCED, COPIED OR USED IN ANY MANNER WITHOUT THE PRIOR WRITTEN CONSENT OF ON-SHORE TECHNOLOGY, INC.

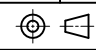
		ON-SHORE TECHNOLOGY, INC.				
TITLE	2.54mm Dual Row Vertical Stacked Pin Header					
PART NO.	DH2-XX-XXX			DWG NO.	DH2-XX-XXX.DWG	
APPROVED	CHECKED	DESIGNED	DRAWN	CUST NO.	Tolerance	
	Marvin 2008.05.15	Marvin 2008.05.15	Marvin 2008.05.15		X. ±0.38 X.X ±0.25	
				SHEET: 01/02	UNIT: mm SCALE: NONE REV: A X° ±5°	

CODE				
01	A:26.00mm	B:3.05mm	C:6.44mm	D:16.51mm
02	A:17.65mm	B:6.60mm	C:3.05mm	D:8.00mm
03	A:18.87mm	B:5.97mm	C:2.41mm	D:10.49mm
04	A:36.32mm	B:10.67mm	C:2.79mm	D:22.86mm
05	A:13.46mm	B:2.03mm	C:5.84mm	D:5.59mm
06	A:21.08mm	B:3.30mm	C:2.79mm	D:14.99mm
07	A:23.61mm	B:2.28mm	C:5.84mm	D:15.49mm
08	A:18.54mm	B:6.35mm	C:2.79mm	D:9.40mm
09	A:30.48mm	B:14.48mm	C:6.10mm	D:9.90mm
10	A:10.92mm	B:3.05mm	C:2.79mm	D:5.08mm
11	A:28.70mm	B:6.86mm	C:2.79mm	D:19.05mm
12	A:14.22mm	B:6.35mm	C:2.79mm	D:5.08mm
13	A:33.78mm	B:4.50mm	C:8.30mm	D:20.98mm
14	A:18.54mm	B:6.35mm	C:3.30mm	D:8.89mm

THESE DRAWINGS AND SPECIFICATIONS ARE THE PROPERTY OF ON-SHORE TECHNOLOGY, INC. AND SHALL NOT BE REPRODUCED, COPIED OR USED IN ANY MANNER WITHOUT THE PRIOR WRITTEN CONSENT OF ON-SHORE TECHNOLOGY, INC.



ON-SHORE TECHNOLOGY, INC.

TITLE		2.54mm Dual Row Vertical Stacked Pin Header		
PART NO.	DH2-XX-XXX		DWG NO.	DH2-XX-XXX.DWG
APPROVED	CHECKED	DESIGNED	DRAWN	CUST NO.
	Marvin 2008.05.15	Marvin 2008.05.15	Marvin 2008.05.15	
				
				UNIT: mm SCALE: NONE SHEET: 02/02 REV: A
				Tolerance X. ±0.38 X.X ±0.25 X° ±5°

CODE				
15	A: 30.48mm	B: 10.16mm	C: 10.16mm	D: 10.16mm
16	A: 33.78mm	B: 13.02mm	C: 3.3mm	D: 17.46mm
17	A: 48.26mm	B: 8.89mm	C: 8.89mm	D: 30.48mm
18	A: 42.54mm	B: 10.16mm	C: 10.16mm	D: 22.22mm
19	A: 38.08mm	B: 11.96mm	C: 7.84mm	D: 18.28mm
20				
21				
22				
23				
24				
25				
26				
27				
28				

THESE DRAWINGS AND SPECIFICATIONS ARE THE PROPERTY OF ON-SHORE TECHNOLOGY, INC. AND SHALL NOT BE REPRODUCED, COPIED OR USED IN ANY MANNER WITHOUT THE PRIOR WRITTEN CONSENT OF ON-SHORE TECHNOLOGY, INC.



ON-SHORE TECHNOLOGY, INC.

TITLE	2.54mm Dual Row Vertical Stacked Pin Header				
PART NO.	DH2-XX-XXX			DWG NO.	DH2-XX-XXX.DWG
APPROVED	CHECKED	DESIGNED	DRAWN	CUST NO.	Tolerance
	Marvin 2008.05.15	Marvin 2008.05.15	Marvin 2008.05.15		X. ±0.38 X.X ±0.25
				SHEET: 02/02	UNIT: mm SCALE: NONE REV.: A X° ±5°