

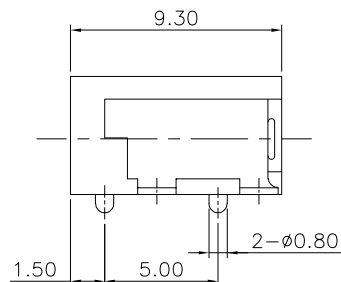
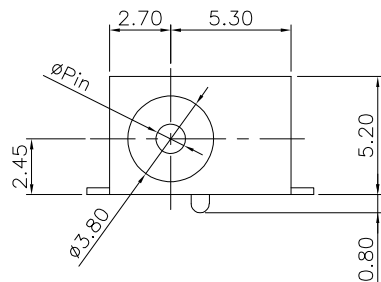
1

2

3

4

5



## Specifications:

Current Rating:DC 24V 2A

Contact Resistance:50 ohm max

Insulation Resistance:100M ohm. min.

Withstanding Voltage:500V AC For one minute

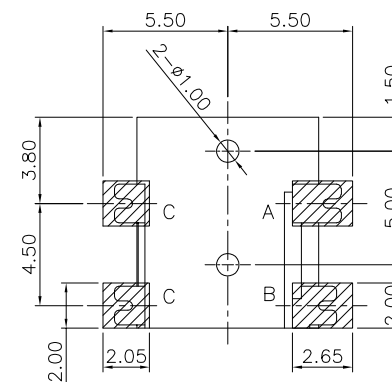
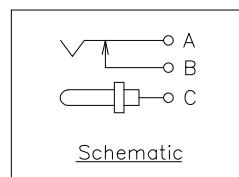
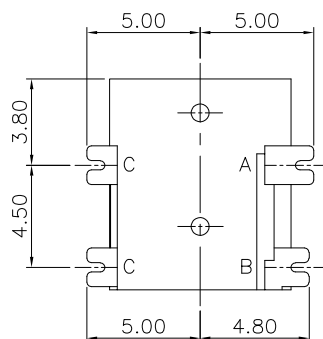
Temperature Range:-20°C ~ +85°C

Tape &amp; Reel: 700 per reel

## How To Order

DCJ-232A-X34

1:Pin  $\phi 1.0\text{mm}$   
2:Pin  $\phi 1.3\text{mm}$



P.C.B Layout  
(Bottom View)

No	Part Name	QTY	Material	Finished
1	Housing	1	High Temp. Plastic	Black (UL94V-0)
2	Pin	1	Copper Alloy	Nickel Plated
3	Terminal A	1	Copper Alloy, T=0.25mm	Silver Plated
4	Terminal B	1	Copper Alloy, T=0.30mm	Silver Plated
5	Terminal C	1	Copper Alloy, T=0.30mm	Silver Plated

RoHS Compliant

F				
E				
D				
C				
B				
A	27-Oct-2020		Lucy Du	
REV	DATE	FILE	BY	

DRAWN:  
Lucy DuCHECKED:  
Jerry ChenAPPROVAL:  
Rory ChenGENERAL TOLERANCE:  
.X=±0.20  
.XX=±0.15

UNIT: MM

SCALE: 1:1

SHEET: 1/1

PROJECTION:



ON-SHORE TECHNOLOGY, INC.

DESCRIPTION:  
DC Power Jack SMT TypePART NO:  
DCJ-232A-X34

SIZE

**A4**

A

B

C

D