

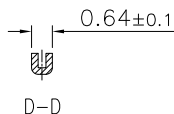
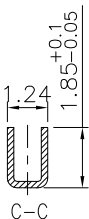
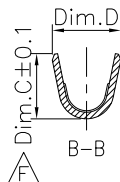
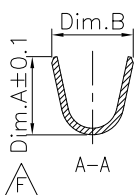
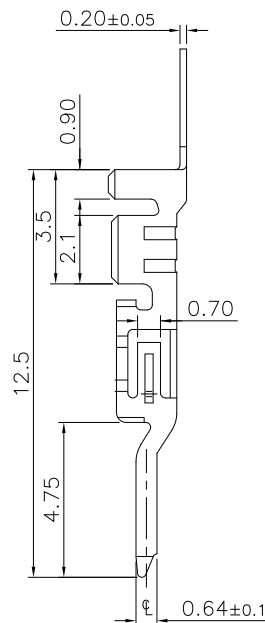
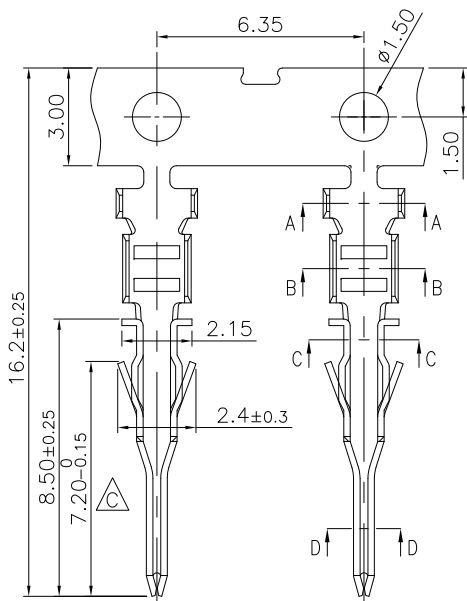
1

2

3

4

5



## Specifications:

Current Rating: 5.0A AC/DC #22AWG

Voltage Rating: 250V AC/DC

Contact Resistance: 10m ohm. max.

Withstanding Voltage: 1,500V AC/minute

Operating Temperature Range: -25°C ~ +105°C

Application Wires: AWG 20-24 or 26-30

Insulation O.D.: AWG 20-24 1.85mm(Max)

AWG 26-30 1.27mm(Max)

Mates With 300HC Series Housing

## Material and Finish

Contact: Phosphor Bronze

Finish: Tin Plated

Packing: 10,000pcs/Reel

## How To Order

300H-T-XX-XXXX

Blank: WIRE SIZE 20-24

2630: WIRE SIZE 26-30

Blank Phosphor Bronze

BS: Brass

Blank Tin Plated

G: Gold Plated


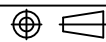
SG: Selective gold plated

SG30: Selective gold plated 30u"



WIRE SIZE	Dim.A	Dim.B	Dim.C	Dim.D
20-24	2.4	2.5	2.0	2.1
26-30	1.91	2.10	1.47	1.65

RoHS Compliant

REV.	DATE	FILE	BY	DRAWN:	GENERAL TOLERANCE:	 <b>ON-SHORE TECHNOLOGY, INC.</b>	DESCRIPTION:	SIZE
K				Dennis Lin	.X = ±0.20 .XX = ±0.15			
J	16-AUG-2023	Modify Temp. Range	Janice Chen	CHECKED: Jerry Chen	UNIT: MM	PART NO:		
I	17-AUG-2021	Modify Carton Size	Lisy Liu				APPROVAL: Mike Wu	SCALE:
H	11-AUG-2020	Increase Plating SPEC.	Jamie Wang	PROJECTION: 	SHEET: 1/2			
G	<del>13-MAY-2020</del>	<del>ECO-TW200003</del>	<del>Romina Wu</del>					
A	04-DEC-2013		Dennis Lin					