

SIGN	DATE	DESCRIPTION	APPROVER

THIS IS CAD DRAWING, DO NOT REVISE MANUALLY!!!

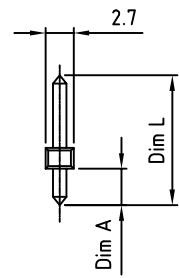
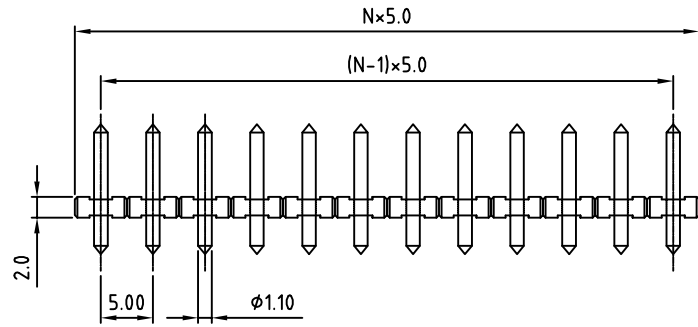
- Material:
- Solid PIN: Brass(CuZn)
 - Surface of solder tail: Tin plated
 - Insulator(housing): Thermoplastic (UL94V-0)

- Electrical:
- | | | | | |
|--------------------------|------------------|-------|-------|-------|
| | UL | CSA | VDE | TUV |
| ● Voltage rating: | 300V | 300V | 300V | 300V |
| ● Current rating: | 10A | 10A | 12A | 15A |
| ● Withstanding Voltage: | 1.6KV | 1.6KV | 2.5KV | 2.5KV |
| ● Operating temperature: | -40°C to +115°C | | | |
| ● Soldering temperature: | 250°C±10°C/5 Sec | | | |
| ● Safety Approval: | | | | |

RoHS Compliant



N = Number of contact



PART NUMBER:

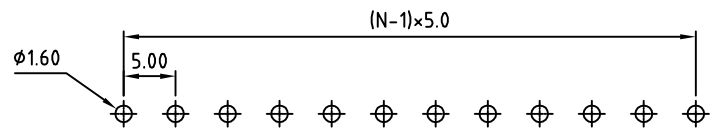
OSTOPXX0X00

No. of Poles
02: Poles
... ..
24: Poles

Dim L Length

A	21.0mm(φ1.1) (Dim A = 4.4)
C	12.7mm(φ1.1) (Dim A = 4.4)
D	16.3mm(φ1.1) (Dim A = 4.4)
G	17.9mm(φ1.1) (Dim A = 4.4)
M	11.8mm(φ1.1) (Dim A = 4.0)

P.C.B. LAYOUT



THESE DRAWINGS AND SPECIFICATIONS ARE THE PROPERTY OF ON-SHORE TECHNOLOGY, INC. AND SHALL NOT BE REPRODUCED, COPIED OR USED IN ANY MANNER WITHOUT THE PRIOR WRITTEN CONSENT OF ON-SHORE TECHNOLOGY, INC.



TITLE		OSTOP 5.0mm Series 2p-24p 1.1mm dia pin			
PART NO.	OSTOPXX00X0	DWG NO.	OSTOPXX00X0.DWG		
APPROVED	CHECKED	DESIGNED	DRAWN	CUST NO.	Tolerance
Shi Jun 2006.10.30	Shi Jun 2006.10.30	Tony 2006.10.30	Tony 2006.10.30		X. ±0.50 X.X ±0.30 X.XX ±0.10 X° ±1°
SHEET: 01/01				REV.: E	UNIT: mm SCALE: NONE